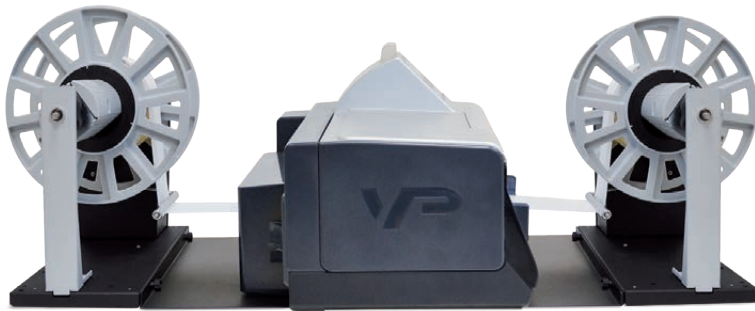


# SMART SOLUTIONS FOR THE LABELING INDUSTRY

## UNWINDER & REWINDER FOR VIPCOLOR VP SERIES PRINTERS



LABEL UNWINDER - VipColor VP485 Printer - LABEL REWINDER  
(Not included)

The unwinder and rewinder for VipColor VP series printers make it easy to unwind and rewind large quantities of labels.

Capable of handling rolls up to 250mm (10") diameter and up to 220mm (8.66") wide, these units improve manufacturing production speed and streamlining the label unwinding / rewinding process. An essential component for any production line requiring zero risk to product label appearance.

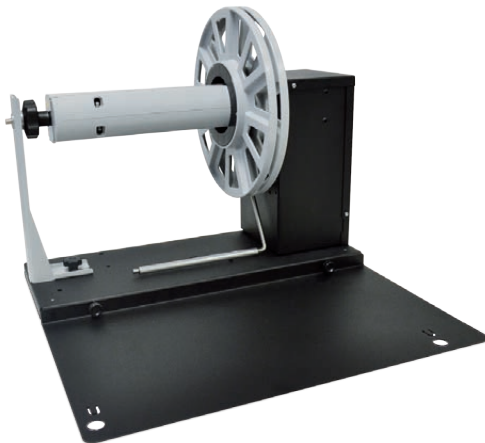
The feet of the printer must be slotted into the slits of the base named "U" (for the model UV1234-S4) or "R" (for the model RV1234-S4). In this way the correct unwinding operations are guaranteed and the unwinder is safely fastened to the printer.



### Electronic and mechanical features:

An external power supply 100/240VAC - 2.5A  $\overline{\text{~}}$  at 24V allows an electronic circuit to provide, through the tension arm, the automatic adjustment of the rotation direction and speed.

The unwinder / rewinder have two types of speed adjustments, through the two buttons it is possible to set the maximum speed required while the tension arm will auto adjust the speed from zero to the set value. The control panel allows to set the label rewinding face-in or face-out option.



### LABEL UNWINDER

The position of the tension arm is calibrated as follows:

- When the printer forwards the media for printing, the tension arm goes up and the device unwinds the media.
- When the tension arm is in the middle position, the device is idle.
- When the printer pulls back the media, the tension arm goes down and the device rewinds it.



### LABEL REWINDER

The position of the tension arm is calibrated as follows:

- When the printer forwards the media for printing, the tension arm goes down and the device rewinds the media.
- When the tension arm is in the middle position, the device is idle.
- When the printer pulls back the media, the tension arm goes up and the device unwinds it.

### LABEL UNWINDER / LABEL REWINDER

UV1234-S4  
Label unwinder

RV1234-S4  
Label rewinder

For the heavy label rolls, our label unwinder and label rewinder have a "L" support, included. Easy to add or remove with a screw, it gives much more stability to the core holder.

