

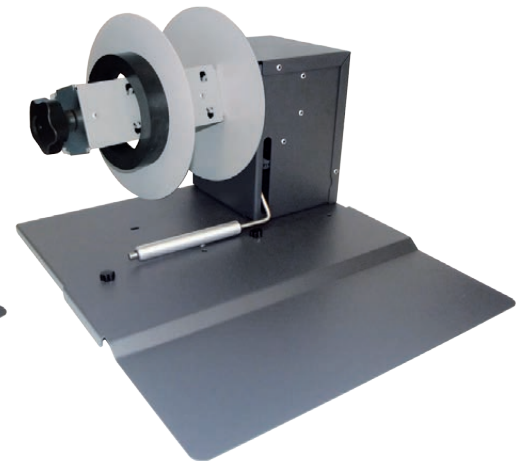
model **SRA**

Small Rewinder with adjustable core holder



model **SR1**

Small Rewinder with 1" fixed core holder



model **SR4**

Small Rewinder with 3" fixed core holder

Our range of small label rewinders can handle labels up to 120mm (4.72") and unwind rolls with a diameter up to 170mm (6.72"). Users can choose among 3 different types of core holder: the adjustable one from 40mm (1.57") up to 76mm (3"), 1" and 3" fixed. Rewinders are equipped with an external auto-switching 100/240VAC - 2.5A \square at 24V power supply and an electronic circuit controls the functions.

The printer must be put onto the rewinder's plate, in this way the correct rewinding operations are guaranteed and also the rewinder is fastened to the printer.

The clockwise (labels face-out) and anticlockwise (labels face-in) rotations can be selected through the switch ON-OFF-ON and two leds, yellow and green, show the sense of rotation.

The small unwinder has two types of speed adjustments; through a knob it is possible to decide the main speed while the tension arm adjusts the speed from zero up to the main selected speed value. When the tension arm is up, the rewinder turns at full speed, while when the tension arm is down, the rewinder is idle. When the roll runs out, the rewinder stops by uttering an acoustic signal.

"All-in-one" version (SRAP - SR4P)

If our small label unwinder is used as a support for printers with "feedback" (the printer pull back the paper to check the gap before printing), it will must have an "All-in-one" circuit to ensure the rewinding of roll, following the movement of the printer. The unit keeps all other features unchanged.

SRAP: Small Rewinder "All-in-one" with adjustable core holder.

SR4P: Small Rewinder "All-in-one" with 3" fixed core holder.